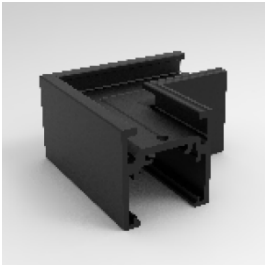


Surface / Pendant  
Magnetic Track  
21mm L Shape  
Horizontal Accessory



LV-INT-SMT21LH



Category	Interior
Type	21mm Magnetic Track Accessory
Installation Method	Surface/Pendant
Width	21mm
Type of protection	IP20

The technical data represent rated values for an ambient temperature of 25°C. The data values for the luminous flux are initially subject to a tolerance of +/- 10% those for the electrical connected load are initially subject to a tolerance of +/- 10%, and those for the colour temperature are initially subject to a tolerance of +/- 150 K. No liability is assumed for typographical or printing errors. The general terms and conditions of LVX apply.